

ISAAC LITTON MIDDLE SCHOOL

4601 Hedgewood Drive | Nashville, TN 37216 | 615-262-6700



476
STUDENTS

AA/Black Students: 45%
White: 35%
Hispanic: 17%
Asian: 2%



48
FACULTY & STAFF



3
COMMUNITY PARTNERS

SERVES GRADES 5-8 IN THE STRATFORD CLUSTER

- ☑ **Open Enrollment**
- ☑ **Offers Bus Transportation**
- ☑ **Offers Before or After Care**

ADMINISTRATION

Executive Principal: Chara Rand, 615-262-6700 ext.510351

Assistant Principal: Tracie Patton, 615-262-6700 ext. 510353

Dean of Students: Brian Rimini, 615-262-6700 ext. 510352

Counselor: Shari Carter, 615-262-6700 ext. 510311

School Board Representative: Jill Speering

 schools.mnps.org/isaac-litton-middle-prep/

 @LittonMNPS

 facebook.com/LittonMiddle

SCHOOL HIGHLIGHTS

- ★ Grade-level Technology (Laptops, iPads,)
- ★ Maker Space with 3D Printer
- ★ Day of Discovery
- ★ STEAM Projects every nine weeks

DRESS CODE

Tops: Any solid color collared shirt.

Bottoms: Navy, black, gray or khaki pants, shorts, skirts or jumpers

ACADEMIC PROGRAMS

STEM

FEATURED EXTRACURRICULAR ACTIVITIES

Band (Pep, Rock, Concert, etc.), Battle of the Books
Beta Club, Day of Discovery, Student Council

FEATURED COMMUNITY PARTNERS

Vanderbilt Scientists in the Classroom, CenterStone (one-on-one Counseling), Litton Alumni Association

RESOURCES & SUPPORTS

Tutoring, Restorative Justice

PARENT ORGANIZATION

Jaime Matthews and Rebecca Bornac,
Co-Presidents

Meet every 1st Tuesday of each month
littonptso@gmail.com
@LittonPTSO (Twitter)



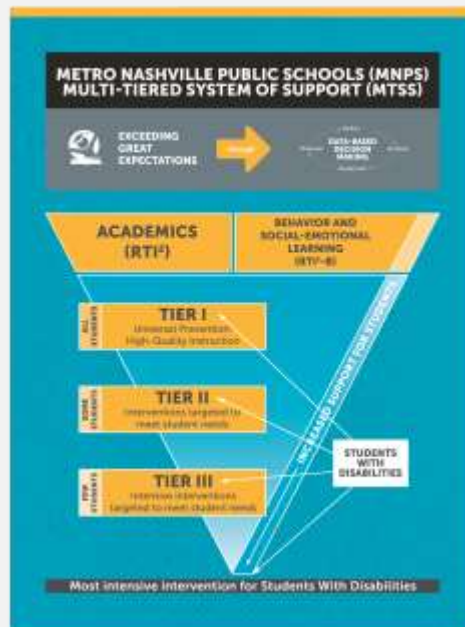
The Metropolitan Nashville Public Schools (MNPS) does not discriminate on the basis of race, religion, creed, sex, gender, gender identity, sexual orientation, national origin, color, age, and/or disability in admission to, access to, or operation of its programs, services, or activities. MNPS does not discriminate in its hiring or employment practices.

MULTI-TIERED SYSTEM OF SUPPORT (MTSS)

Metro Schools knows our students each have a unique set of needs and the teaching and learning in our classrooms must reflect that. Through our Multi-Tiered System of Support (MTSS) framework, educators and administrators have proven tools at their disposal to support a timely and effective response to academic and behavioral needs for each student — meeting the child where they are.

HOW MTSS WORKS

Our school has a dedicated MTSS team, representative of teachers and leaders throughout the building. This team meets to discuss students who may need additional supports and reviews each student’s supporting data. Our MTSS data team meets every five weeks to identify students who may need additional supports and interventions. This team monitors students’ progress and adjusts plans as needed.



MTSS IN ACTION AT ISAAC LITTON MIDDLE SCHOOL

Universal Supports for All Students	Targeted Supports and Interventions	Intensive Supports and Interventions
<ul style="list-style-type: none"> • Clear expectations for daily attendance • School-wide positive behavior expectations • Equitable access to rigorous grade-level, standards-based instruction that is culturally responsive and integrates social/emotional development • Inclusive partnerships with families and communities • Consistent school-wide discipline procedures • Physical activity and nutrition services 	<ul style="list-style-type: none"> • Why Try • I-Ready ELA • Read 180 • I-Ready Math • VMath 	<ul style="list-style-type: none"> • Why Try • Corrective Reading • System 44 • I-Ready Math